

USER MANUAL

Last edited: 09.11.2021



V. BRØNDUM A/S

A0.80.0221



RONDA[®] Safe Change

Compact Class H vacuum cleaner for health-hazardous dust
with built-in HEPA filter in the collection container

IMPORTANT!

Read this manual before you start using the vacuum cleaner.

USER MANUAL

Table of Content

General Description	5
Safety.....	6
Guidelines Regarding the Disposal of the Machine	7
Technical Data.....	8
Applications	10
ASBESTOS AND HEALTH-HAZARDOUS DUST	10
Replacing Collection Container incl. HEPA Filter.....	12
Cleaning and Maintenance	12
Trouble Shooting	13
Declaration of Conformity	14
Service and Repair	14

RONDA[®] Safe Change

Class H vacuum cleaner for health-hazardous dust.

General Description

Congratulations on your new RONDA[®] Safe Change vacuum cleaner from V. BRØNDUM A/S.



Read this manual before you operate the machine.

Keep the manual readily accessible to all users.

RONDA[®] Safe Change is a small, portable vacuum cleaner, which is designed for the collection of health-hazardous dust in class H. For collecting all types of dust with all occupational exposure limit values, including carcinogenic dust types and pathogens. The vacuum cleaner is designed for use in environments where the material collected is of such dangerous nature that any contact must be avoided.

RONDA[®] Safe Change vacuum cleaner consists of a suction unit and a collection container with built-in HEPA filter. When the collection container is full, a warning light comes on as a sign that the collection container incl. HEPA filter must be change before proceeding. The collection container and HEPA filter form a closed system, whereby exposure of the user to the harmful dust when emptying the vacuum cleaner or exchanging the filter is avoided, which is difficult or impossible when using a regular vacuum cleaner. Furthermore, because of the closed system, the vacuum cleaner/suction unit itself is not polluted by the vacuumed material, and the container with the collected harmful material can be transported and deposited or disposed of in a secure way.

With RONDA[®] Safe Change it is not necessary to perform DOP test, as every new collection container comes with a filter test certificate.

RONDA[®] Safe Change is designed for commercial and industrial use.



- Portable low-weight vacuum cleaner with a carry strap
- Made of strong polypropylene
- Protection level IPX4 (IEC 60 529)
- Satisfies the demands of EN 60 335-2-69 Annex AA, for collection of health hazardous dust in dust class "H"
- Warning light in case of too low air flow, when container incl. HEPA filter needs changing.
- Collection container with built-in HEPA filter is tested at the manufacturer (with certificate).

USER MANUAL

Safety

The user manual is to ensure a secure operation of the vacuum cleaner, and to secure that the user is in no way uncertain as to the use. The manual must be stored near the vacuum cleaner.

Does any uncertainty arise as to the use of the vacuum cleaner or the material collected, the work should be stopped until all questions have been cleared.

Pictures and drawings are for illustrative purpose and will make the understanding of the manual easier. The pictures shown may therefore be different from the actual product.

- May only be used for dry dust. The vacuum cleaner is NOT suitable for collecting liquid or damp material.
- Under no circumstances should the vacuum cleaner be used in areas where potentially explosive dust types or vapors may be present.
- The vacuum cleaner must not be used or stored outdoors in a wet environment.
- Collection container with HEPA filter must be installed during use.
- **IMPORTANT! The vacuum cleaner must not be started with covers removed.**
- **IMPORTANT! The suction unit / inlet / outlet must not be covered when the machine is in use.**

Please read the RONDA Safety Instructions which were delivered with the machine together with this user manual.

Does the safe use or maintenance of the appliance raise any questions; do not hesitate to contact either your dealer or V. BRØNDUM A/S.

USER MANUAL

Guidelines Regarding the Disposal of the Machine



The product you have purchased is subject to Directive 2002/96/EC of the European Parliament and the Council of the European Union on waste electrical and electronic equipment (WEEE) and should not be disposed of as unsorted municipal waste. Please utilize your local WEEE collection facilities in the disposition of this product and otherwise observe all applicable national requirements.

USER MANUAL

Technical Data

RONDA® Safe Change vacuum cleaner is connected to 230 V power supply.

Make sure that the voltage and fuse of the power supply correspond with the information of the data plate of the machine and the information of this manual.

Below table shows the technical data of RONDA® Safe Change vacuum cleaner.

	EU	
Voltage	230	Volt
Suction motor (max./nom.)	1100/1050	Watt
Power outlet, max.	-	Watt
Vacuum	2600	mmH ₂ O
	25,5	kPa
Air volume, max.	54	l/sec
	194	m ³ /h
Air volume max, measured	47 / 170	l/sec / m ³ /h
Filter area, multi tube filter	-	m ²
Filter area, HEPA	0,3	m ²
Collection capacity (bag / container)	3	l
Height (without coupling)	385	mm
Length	395	mm
Width	225	mm
Weight without accessories	6	kg
Length of supply cable	8	m
Noise		
Machine pressure level: uncertainty K _{pA} =3dB (Measured only as machine)	<78	dB(A)
Max. Sound Power Level L _{WA} = uncertainty K _{WA} =3dB (Measured with hose, pipes and floor accessory)	<85	dB
Vibration	≤ 2,5	m/s ²

USER MANUAL

Standard Accessories

RONDA® Safe Change vacuum cleaner is delivered with a small set of accessories including hose and two nozzles.



You can reorder the accessories using the following product numbers:

1. 32 mm accessories set	82.33.3291
2. Plastic hose Ø 32mm 2,75 m with air adjustment.....	84.54.3231
3. Crevice nozzle.....	82.34.3200
4. Round brush.....	80.34.3201

USER MANUAL

Applications

RONDA® Safe Change is a vacuum cleaner in accordance with DS/EN 60335-2-2 and CEI/IEC 60335-2-69 Annex AA class H and may only be used as such.

RONDA® Safe Change may be used for collection of dust hazardous to health according to CEI/IEC 60335-2-69 Annex AA dust class **H**.

RONDA® Safe Change may **not** be used for collection of fluids or moist dust.

RONDA® Safe Change may **not** be used for collection of flammable, explosive, poisonous or extremely health-hazardous types of dust, liquid or gas.

RONDA® Safe Change may only be used in dry environments and may not be used or stored outdoors or indoors under wet conditions.

The capacity of a vacuum cleaner to suck vacuum depends on the air. Theoretically, the suction capacity will fall when the vacuum cleaner is used at altitudes. The suction capacity of the vacuum cleaner will be constant from 0 to approx. 800 m above sea level. From 800 to 2000 m the suction capacity will theoretically fall to approx. 75%. It is not recommended to use the vacuum cleaner at more than 2000 m above sea level, as the cooling and the suction capacity will be considerably reduced.

Asbestos and Health-Hazardous Dust

Always check up on the local/national regulations where the work is performed.

Always investigate how the disposal is to be packed / wrapped up. It might be different from place to place. Usually the following is mentioned:

- Close-fitting packing, drum/vat with cover
- Plastic bag min. 100 µm.

Collection of dust hazardous to health must always take place in collection bag. The collection bag must be removed from the machine and disposed of in accordance with the national regulations. In the case of RONDA® Safe Change, the collection container including bag and filter is changed as a closed system at every emptying.

Always mark the materials and waste according to the national regulations.

If the machine has been used inside a closed asbestos area, the machine must be disassembled and cleaned before leaving this area to be used in a clean environment.

If the machine was used for cleaning after taking samples, the collection container with built-in HEPA filter must be replaced. The collection container is removed and disposed of as dangerous waste / asbestos, and the machine is wiped off using wet wipes which are then disposed of together with disposable suit and other PPE.

The machine must be emptied, cleaned and packed before transport. Mark the packing according to the national regulations.

USER MANUAL

Assembling

- Check that the packing is intact and has no sign of damage from handling and transport.
- Unpack RONDA® Safe Change vacuum cleaner and check that all the parts ordered are there.
- Remove the blanking plug and insert the hose in the container coupling of RONDA® Safe Change. Always make sure that the blanking plug is removed before turning on the vacuum cleaner.
- Make sure that the collection container and the filters are intact and undamaged (see the section: Replacement of Collection Container incl. HEPA filter).
- Before the cable is connected to a power supply, check that cable and plugs are undamaged. If the cable or plug is damaged, the parts must be replaced by a professional. Only use original cable.
- In case the plug does not fit the mains socket, the plug must be replaced. Color codes of the wires:
 - Green/yellow wire is connected to terminal marked with E or earth-symbol
 - Blue wire is connected to terminal marked with N (neutral)
 - Brown wire is connected to terminal marked with L (phase)

ATTENTION! The cut-off plug must be destroyed to avoid accidents – it can be dangerous if a cut-off plug is inserted into an active socket.

- Connect the machine to 230 V mains with a reliable grounding.
- RONDA® Safe Change vacuum cleaner is turned on an off at the switch located on the suction unit.

Thermal overload

The motor is equipped with a thermal overload control which switches off the machine if the hose is blocked or if the vacuum cleaner is switched on with the blanking plug fitted, or if the collection container is full and needs to be replaced.

When the motor has cooled down sufficiently, the control function is reset automatically. The cause of overheating must always be investigated and resolved.

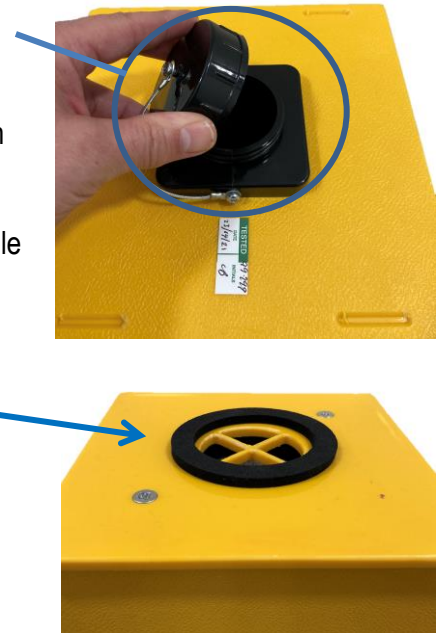
USER MANUAL

Replacing Collection Container incl. HEPA Filter

When the suction power starts to drop and the indicator light on the vacuum cleaner flashes continuously, it is time to replace the collection container.

Follow this procedure to replace the collection container incl. HEPA filter:

1. Seal off the collection container by fitting on the blanking plug.
2. Turn off the vacuum cleaner.
3. Open the four clips that hold the collection container onto the vacuum cleaner.
4. Lift off the collection container and dispose of it according to applicable guidelines for the collected material.
5. Remove the packing from the new collection container, inspect it and make sure that the gasket at the bottom of the container is intact.
6. Put the collection container in place on the vacuum cleaner.
7. Fasten the collection container by means of the four clips.
8. Remove the blanking plug from the collection container before use.



Cleaning and Maintenance

The collection container must always be replaced after use due to the risk of self-ignition.

Read the section regarding safety before cleaning and maintaining the vacuum cleaner.

The easiest way to clean the machine is following:

- Wipe the exterior of the machine with a dry or damp cloth.

Maintaining the vacuum cleaner

The vacuum cleaner is made of maintenance-free parts and therefore needs no daily maintenance, apart from external cleaning and check that the cords and plugs are undamaged.

The easiest way to clean the vacuum cleaner is with a damp cloth. Do not aim jets of water directly at the vacuum cleaner.

IMPORTANT!
The machine must not be connected to the power supply during service and cleaning.

USER MANUAL

To avoid downtime and to make sure that the safety of the vacuum cleaner is intact, it is recommended that an authorized service technician inspect the electrical parts annually.

Check / Maintenance of the Machine

Description	Before/after use	Month / Year	Hours
Check / replacement of motor			700
Safety check of the machine		Yearly	
Emptying and cleaning	After use (as required)		
Check of filters and machine in general	Before use		
Check of cord and plugs	Before use		
Check of alarm (lamp)	Before use		

Reordering Collection Container incl. HEPA Filter:

Collection container incl. HEPA filter 84.16.0001

Trouble Shooting

If the machine does not vacuum satisfactorily:

- Hose, pipe or nozzle may be blocked, or the blanking plug is fitted.
Stop the machine and remove the blocking or the blanking plug.
- The collection container may be full.
Stop the machine and replace the container. See the relevant section.
- A leak may have occurred when fitting the collection container.
Start the machine and block the hose. Normally you will be able to hear a possible leak. Loosen the clips of the collection container, check the gasket at the bottom of the container, place the container onto the vacuum cleaner again and close the clips to fasten it.
- The HEPA filter may be blocked.
Replace the collection container incl. HEPA filter as described in the corresponding section.

Thermal overload activated:

- The machine is not getting enough cooling air and is automatically cut off.
Let the motor cool and resolve the cause of the overload (see above).

Any repairs and service on the vacuum cleaner must be carried out by V. BRØNDUM A/S, an authorized dealer or a similarly qualified person to avoid dangers.



DECLARATION OF CONFORMITY

V. BRØNDUM A/S
Sadolinsvej 14
DK – 8600 Silkeborg

V. BRØNDUM A/S

hereby declares that the following product:

Electrically operated industrial vacuum cleaner,
classified for dust class “H” .

Model:
RONDA® Safe Change

has been designed and produced in conformity with the basic requirements and other relevant conditions of the following directives:

Machine Directive (Directive 2006/42/EU)

EMC-Directive (Directive 2014/30/EU)

ROHS-Directive (Directive 2011/65/EU - COMMISSION DELEGATED DIRECTIVE (EU) 2015/863 31 March 2015)

The compliance has been achieved by use of the following standards:

EN 60335-1
EN 60 335-2-2
EN 60 335-2-69

Silkeborg, June 2021

Kennet Vallø
Product Manager

USER MANUAL

Service and Repair

Service and repair are provided free of charge within the guarantee period (invoice must be presented) provided that:

- The defect has been caused by a construction defect or defective materials. (Normal wear and tear, misuse or insufficient maintenance is not covered by the guarantee).
- No repair attempts have been made by others than V. BRØNDUM A/S, or service centres approved by V. BRØNDUM A/S to carry out guarantee repairs.

Service free of charge includes replacement of defect parts and the cost for related working hours.

The machine is handed in via the V. BRØNDUM A/S dealers or is sent directly, carriage paid, to:

V. BRØNDUM A/S
Sadolinsvej 14
DK-8600 Silkeborg

Tlf. (+45) 8682 4366
Fax (+45) 8680 3363
E-mail v@broendum.com

Subject to changes.